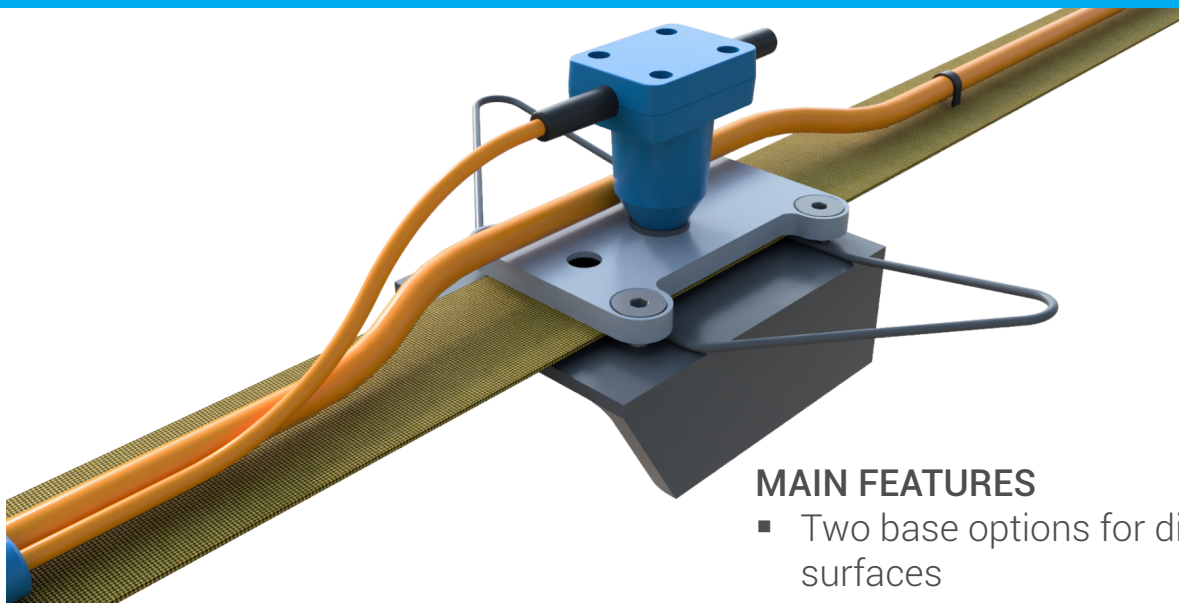


# Towed LandStreamer for MASW / reflection / refraction surveys



AIRBORNE MAGNETOMETRY  
MARINE MAGNETOMETRY  
DRONE MAGNETOMETRY  
MARINE ERT  
MARINE SEISMICS  
BOREHOLE SEISMICS  
LAND MAGNETOMETRY



The Towed **LandStreamer** is a geophone array specifically designed for fast, high-resolution, and cost-effective land seismic acquisition. It is particularly well suited for near-surface seismic methods such as reflection, MASW, and refraction, where a towed solution offers significant advantages over conventional streamers with planted geophones. A typical complete system includes a LandStreamer with any seismograph, and an AWD source.

Although, highest data quality can be achieved by dragging the streamer on solid surfaces, such as roads or runways, it can also be used in the more adverse conditions, such as dirt roads, sandy surfaces, mudflats, deserts, etc.

The design of the streamer is exceptionally robust and easy-to-use. We offer two types of steel bases – one for dense surfaces and one for loose terrain – each can be quickly swapped on your LandStreamer. The design and weight of bases ensures the required coupling for ground motion registration.

The stabilizer is easy to install and protects the geophone from tipping over when encountering obstacles. An inter-section platform provides secure connection between LandStreamer segments and helps reduce the overall transport weight of the system, lowering logistics costs.

Any type of geophone can be used with the LandStreamer – low frequency or standard vertical, horizontal, multicomponent (2C or 3C), and omnidirectional.

## MAIN FEATURES

- Two base options for different surfaces
- Efficient curved stabilizers
- Easy adjustable spacing
- Split into sections
- Compatible with any seismograph and geophones

**LandStreamer** is compatible with any multi-channel seismograph and can be manufactured with the required number of receivers, spacing and lead-in cable. An important feature of the design is the ability to quickly disconnect geophones from the platforms and spread cable from the belt for further planting with conventional spikes.

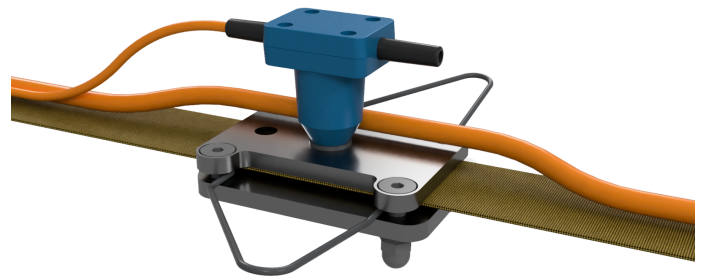
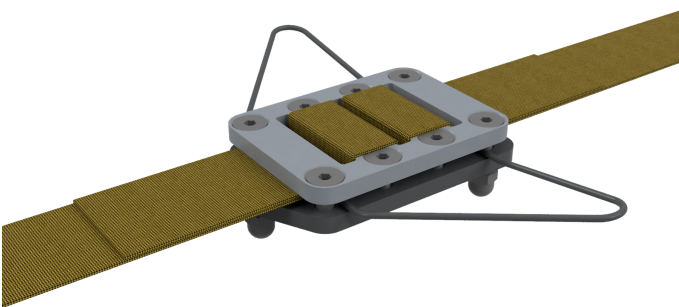
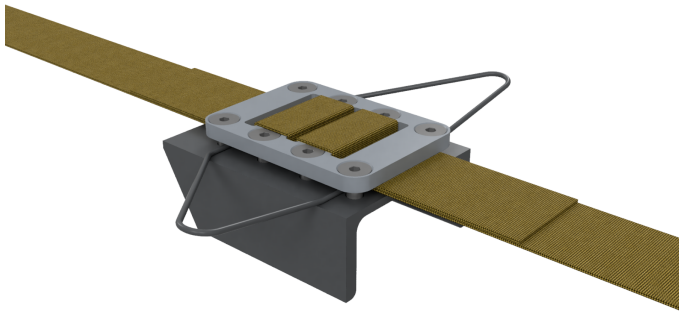
We can manufacture LandStreamer in modules for convenient handling and reduced transportation costs. If required, we can also supply the system in transport cases.

The base plates are made of hard steel and are abrasion-resistant for long-term durability. The easy-to-replace tripod support provides stability, delivers high surface pressure, and enables the unit to plow into soft ground for improved coupling. Two types of base plates are available to ensure optimal performance on any surface accessible to the LandStreamer.

We use only the most durable strap on the market, with a tensile strength of 10,000 lb (~4,500 kg). It is firmly clamped between the top and base plates without perforation or damage. At the same time it allows you to easily reposition the plates along the strap to adjust spacing as needed for your specific survey requirements.

## TECHNICAL SPECIFICATIONS

Number of receivers | 12 ÷ 96  
 Number of components | 1 ÷ 3  
 Geophones natural frequency | 2 ÷ 15 Hz  
 Geophone sensitivity | regular / high  
 Geophone type | vertical, horizontal, multicomponent (2C or 3C)  
 Geophone connector | KCL (Kooter)  
 Receiver spacing | 0.3 ÷ 10 m (1 ÷ 30 ft)  
 Lead-in | any  
 Seismograph connector | any  
 Webbing material | polyester  
 Breaking strength | 4,500 kg (10,000 lb)  
 Rugged transportation case | optional



*Specifications are subject to change without prior notice.*

*This document was reviewed on January 27, 2026. For the latest specifications, please refer to: <https://geodevice.co/landstreamer/>*



**CANADA** 421 7 Ave SE 30th Floor, Suite 3000, Calgary, AB T2P 4K9  
+1 587 2881330 office@geodevice.ca

**FRANCE** 256 Rue des Poilus, 83470 Saint-Maximin-la-Sainte-Baume  
+33 42 2570001 office@geodevice.fr

**KAZAKHSTAN** 133/282 Zhunisova str., Almaty, 055551  
+7 727 3443282 office@geodevice.kz